

TECHNICAL SPECIFICATIONS

Product	Pressotherapy + Thermotherapy + Electrostimulation
Reference	0009361
Voltage	AC 200-240 V ~
Input frequency	50 Hz
Power	350 W
Dimensions	44 x 31 x 15 cm

COMPONENTS

- Main body



- Suit, Pressotherapy and thermotherapy function



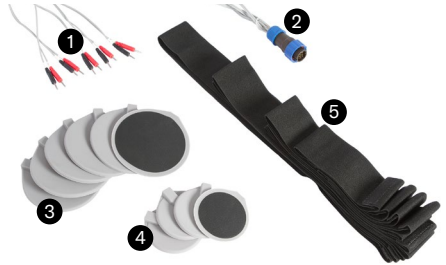
Section ID	Section of the Suit	Thermotherapy Function Connector Number
R-0-1	Right boot	2
L-0-1	Left boot	1
R-2-3-4-5	Right leg	2
L-2-3-4-5	Left leg	1
R-8-9	Right arm	4
L-8-9	Left arm	3
R-6-7 / L-6-7	Waist	5

- Mat. With pressotherapy and thermotherapy connectors



- 1 Air pressure tube connector
- 2 Thermotherapy connector

- Electrostimulation Accessories



- 1 Electrostimulation cables (numbered in pairs, red and black from 1 to 5)
- 2 Electrostimulation connector
- 3 Large round electrode pads
- 4 Small round electrode pads
- 5 Elastic bands of different sizes

CONTROL PANEL



- 1 On / Off button
- 2 Display screen and parameter control

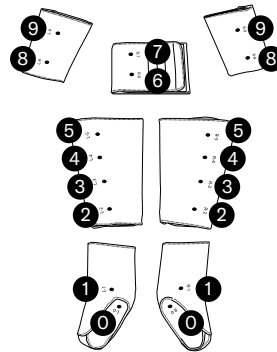
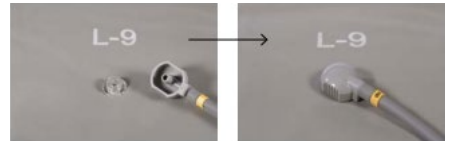
REAR PANEL



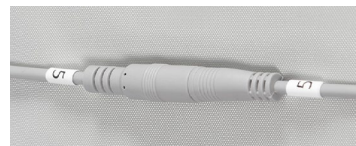
- 1 Air pressure tube connector
- 2 Electrostimulation connector
- 3 Thermotherapy connector
- 4 Electrical power supply connector
- 5 Fuse

CONNECTION AND ASSEMBLY INSTRUCTIONS

- Connect the power cable to the rear panel of the main body.
- Connect the piece coming from the mat (the one with a mobile revolving cap on one end) to the air pressure tube connector located on the rear panel of the main body. Insert the piece and then twist the cap until it feels tight enough.
- Insert the thermotherapy connector into the back panel of the main body.
- Insert the electrostimulation connector into the back panel of the main body.
- Connect the pressure tubes housed within the mat to the various sections of the suit. A number will indicate where each tube should be connected.



- Connect the thermotherapy cables housed in the blanket with the corresponding cables found on the different sections of the suit. In the previous section of this manual "Suit. Pressotherapy and thermotherapy function" it indicates which section of the suit you should connect to the cables of the thermotherapy function. The sections can be identified with the numbers 1 to 5.



- For the use of the electrostimulation function:
 - The cables are numbered in pairs. Each pair is formed of a red and a black cable with the same number, from 1 to 5.
 - Connect each pair of cables to a pair of electrodes.
 - Place each pair of electrodes on the area of the body that needs treatment, using the correct sized elastic band, so that they are secure.
- Always apply conductive gel between the electrode and the skin.

POWER AND CONFIGURATION

- Press the on/off button to start the device. When it is on, a beep will sound and the welcome screen will be displayed.
 - Press the screen to move to the next display screen and the parameter control.

